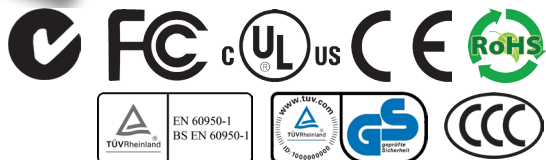


Part Number: T4429ST - 12VDC 3Amp C8 Desktop SMPSU

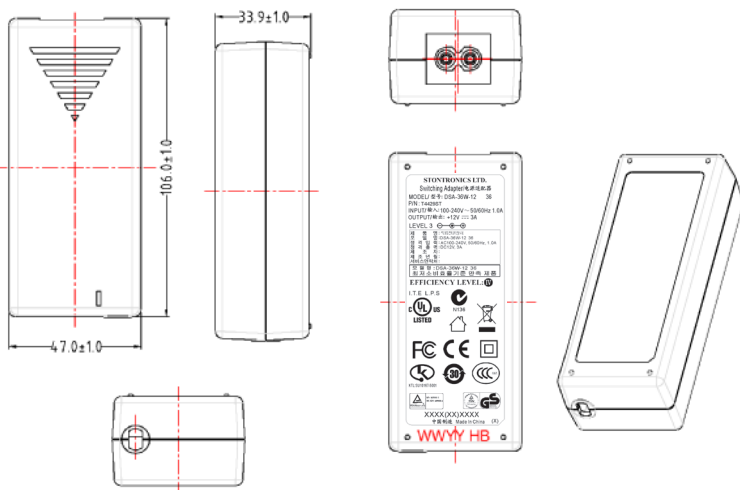
Product Image



LEVEL COMPLIANT

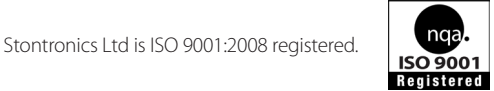


Mechanical Drawings (mm)



Disclaimer

Stontronics Ltd accepts no responsibility for typographical errors in the production of this leaflet. Product specifications are subject to change without notice.



For more information please contact us:
 Stontronics Ltd,
 Chancerygate Business Centre, Cradock Road, Reading, Berkshire, RG2 0AH
 Tel: 0118 931 1199
 Fax: 0118 931 1145
 Email: info@stontronics.co.uk • www.stontronics.co.uk

Input

Input Voltage Rating 100 - 240VAC
 Input Voltage Range 90 - 264 VAC
 Input Frequency 47 - 63 Hz
 Input Current 0.5A (230VAC) / 1A (115VAC) Max.
 AC Inrush Current At full load, 25°C, cold start these will be no damage and input fuse will not blow
 Input Power (with no load)..... <0.3W
 AC Inlet IEC320-C8 (Fig-8)

Output

Output Voltage +12VDC
 Minimum Load Current 0Amp
 Nominal Load Current 3Amp
 Nominal Load Power 36Watts
 Output Regulation +/- 5 %
 Line regulation +/-2% at nominal conditions
 Protections Short-Circuit, Over Current & Over Voltage
 Ripple And Noise 300mV p-p Maximum
 Efficiency 82.25% min.
 EuP/ErP Rating Level IV Compliant
 DC Plug Jack plug 5.5*2.1*12mm (1.5Meter lead length)

Other

Dimensions 107 (L) * 48 (W) * 34.9 (H) mm Max.
 Weight 270g Maximum
 Operating Temperature 0 °C To 40 °C
 Operating Humidity 20 ~ 85 % Rh. Non-Condensing
 MTBF 50,000 Hours (@80% Load)

Safety

Dielectric Withstanding Voltage Test (HI-POT Test)
 Primary To Secondary: 3000VAC 10mA 1minute or 4242VDC 10mA 1 minute
Leakage Current
 0.25mA maximum, at nominal AC input voltage and frequency
Emi Standards
 Designed to meet FCC PART 15 CLASS B, CE(EN55022), GB9254, GB17625.1 & C-TICK
Safety Standards
 Designed to meet UL/C-UL(UL60950-1), TUV-GS(EN60950-1), T-LICENSE(BS EN60950-1), EK-MARK(K60950), CCC(GB4943) & SAA(AS/NZS60950)