



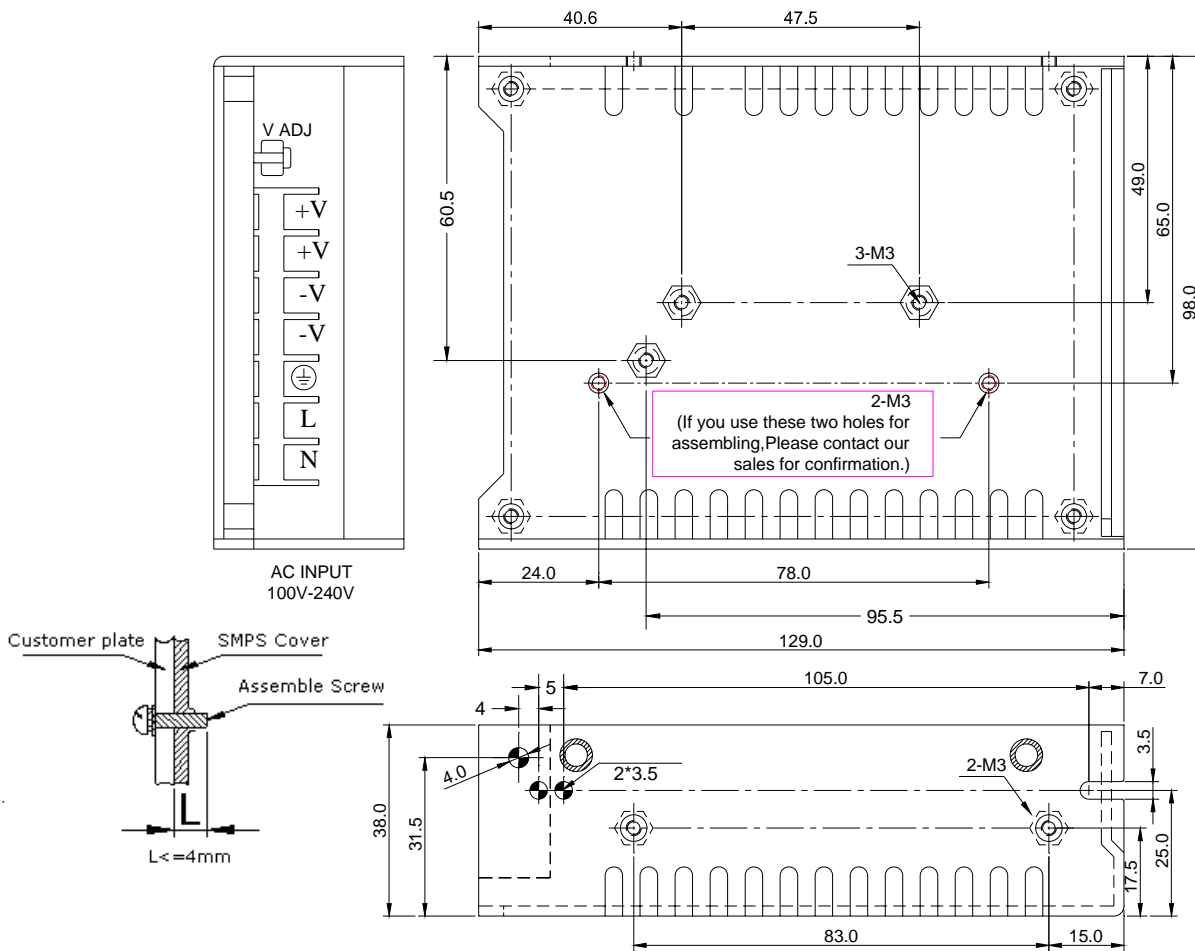
Features:

- Universal AC input/ Full range
- High Efficiency, and High reliability
- Output protections: OLP/OVP/SCP
- Wide operating ambient temperature (-20°C~70°C)
- All using 105°C long life electrolytic capacitors.
- 100% full load burn-in test
- 3 years warranty

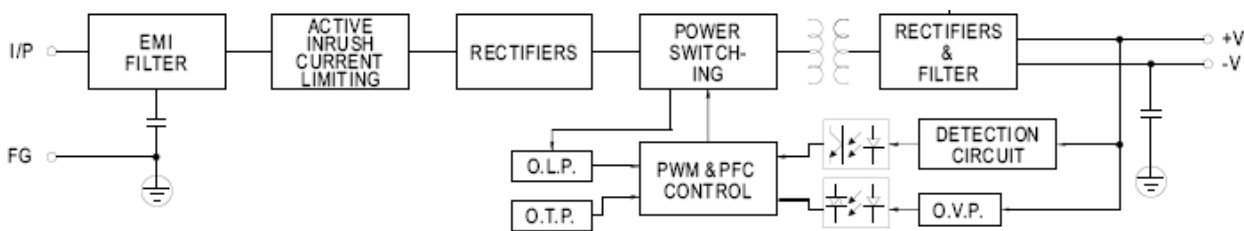
SPECIFICATION

MODEL		PD-60-5	PD-60-12	PD-60-15	PD-60-24	PD-60-48	
OUTPUT	DC Output	5.0V	12.0V	15.0V	24.0V	48.0V	
	Rated Current	10A	5A	4.0A	2.5A	1.25A	
	Current Range	0~10A	0~5.0A	0~4.0A	0~2.5A	0~1.25A	
	Ripple and Noise Note 2	-20~70°C <50mV		<50mV	<100mV	<100mV	<200mV
	Voltage ADJ. Range	4.6V-5.5V	11.0V-13.0V	13.7V-16.0V	22.0V-25.3V	45.3V-51.3V	
	Voltage Accuracy	±2.0%	±2.0%	±2.0%	±2.0%	±2.0%	
	Line Regulation	±0.5%	±0.5%	±0.5%	±0.5%	±0.5%	
	Load Regulation	±2.0%	±2.0%	±2.0%	±2.0%	±2.0%	
	Set-up Time	<2S (115Vac input, Full load); <1.0S (230Vac input, Full load)					
	Hold up Time	>10mS(115Vac input, Full load); >20mS(230Vac input, Full load)					
	Temperature Coefficient	±0.03%/°C					
	Overshoot and Undershoot	<5.0%					
INPUT	Voltage Range	88Vac~264Vac,124~370Vdc					
	Frequency Range	47Hz~63Hz					
	Efficiency (Typical)	115Vac input	75%	81%	81%	83%	84%
		230Vac input	76%	82%	82%	83%	85%
	AC Current (max.)	1.5A	1.5A	1.5A	1.5A	1.5A	
	Inrush Current (Typical)	<40A@115Vac	<60A@230Vac	Cold start			
	Leakage Current	<0.25mA@115Vac	<3.5mA@230Vac				
PROTECTION	Over Load	105%~150% of rated output current, hiccup mode, auto recovery					
	Over Voltage	110%~125% of rated output voltage, shut down(48V)		120%~150% of rated output voltage, shut down(5V), 110%~140% of rated output voltage, shut down(15V,24V), 110%~133% of rated output voltage, shut down(12V),			
	Short Circuit	Long-term mode, auto recovery					
ENVIRONMENT	Operating amb. Temp. & Hum.	-20°C~70°C; 20%~90%RH No condensing((refer to the derating curve)					
	Storage Temp. & Hum.	-40°C~85°C; 10%~95%RH No condensing					
SAFETY & EMC (Note 3)	Safety Standards	UL60950-1; EN60950-1: 2006					
	Withstand Voltage	Primary-Secondary:3.0KVac; ≤10mA .Primary-PG:1.5KVac; ≤10mA. Secondary-PG:0.5KVdc;≤10mA.					
	Isolation Resistance	≥100M ohms					
	EMI Conduction&Radiation	Compliance to EN55022(CISPR22)ClassB					
	EMS Immunity	Compliance to EN61000-4-2,3,4,5,6,8,11;ENV50204,light industry level,criteriaA					
OTHERS	MTBF (MIL-HDBK-217F)	More than 200,000Hrs (25°C, Full load)					
	Dimension (L*W*H)	129×98×38mm					
	Packing	30PCS/CTN, 14.2KGS, 0.044CBM					
	Cooling method	Cooling by free air convection					
NOTE	<ol style="list-style-type: none"> 1. All parameters NOT specially mentioned are measured at 230Vac input, rated load and 25°C of ambient temperature. 2. Measured at 20MHz of bandwidth by using a 12" twisted pair-wire terminated with a 0.1 uF & 47uF parallel capacitor. 3. The SPS is considered a component which will be installed into final equipment. The equipment must be re-confirmed that it still meets EMC directives. 4. We offer accessories for Din-35 rail bar. Please contact sales staff for details. 						

Mechanical Specification



Block Diagram



Derating Curve

