

■ Features :

- Universal AC input/Full range
- Protections:Short circuit/Over load/Over voltage
- Cooling by free air convection
- 100% full load burn-in test
- Fixed switching frequency at 50KHz
- 2 years warranty

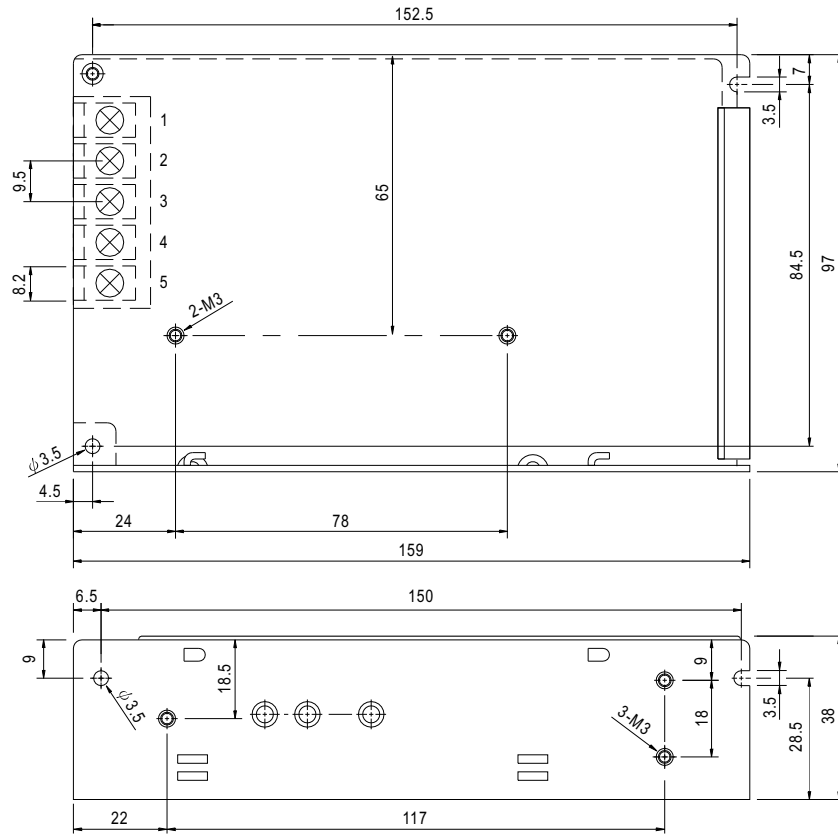


## SPECIFICATION

| MODEL                 | S-60-5  | S-60-12  | S-60-15      | S-60-24       |              |
|-----------------------|---|--|--------------|---------------|--------------|
| OUTPUT                | DC VOLTAGE  | 5V   | 12V          | 15V           | 24V          |
|                       | RATED CURRENT   | 12A  | 5A           | 4A            | 2.5A         |
|                       | CURRENT RANGE   | 0 ~ 12A  | 0 ~ 5A       | 0 ~ 4A        | 0 ~ 2.5A     |
|                       | RATED POWER   | 60W  | 60W          | 60W           | 60W          |
|                       | RIPPLE & NOISE (max.) Note.2  | 120mVp-p   | 120mVp-p     | 150mVp-p      | 150mVp-p     |
|                       | VOLTAGE ADJ. RANGE  | 4.75 ~ 5.5V  | 10.8 ~ 13.2V | 13.5 ~ 16.5V  | 21.6 ~ 26.4V |
|                       | VOLTAGE TOLERANCE Note.3  | ±2.0%  | ±1.0%        | ±1.0%         | ±1.0%        |
|                       | LINE REGULATION   | ±0.5%  | ±0.5%        | ±0.5%         | ±0.5%        |
|                       | LOAD REGULATION   | ±1.0%  | ±0.5%        | ±0.5%         | ±0.5%        |
|                       | SETUP, RISE TIME  | 300ms, 50ms/230VAC      800ms, 50ms/115VAC at full load  |              |               |              |
| HOLD TIME (Typ.)      | 90ms/230VAC      12ms/115VAC at full load   |  |              |               |              |
| INPUT                 | VOLTAGE RANGE   | 85 ~ 264VAC      120 ~ 370VDC  |              |               |              |
|                       | FREQUENCY RANGE   | 47 ~ 63Hz  |              |               |              |
|                       | EFFICIENCY(Typ.)  | 73%  | 76%          | 77%           | 79%          |
|                       | AC CURRENT (Typ.)   | 2A/115VAC      1A/230VAC   |              |               |              |
|                       | INRUSH CURRENT (Typ.)   | COLD START 20A/115VAC      40A/230VAC  |              |               |              |
|                       | LEAKAGE CURRENT   | <3.5mA / 240VAC  |              |               |              |
| PROTECTION            | OVER LOAD   | 105 ~ 150% rated output power<br>Protection type : Hiccup mode, recovers automatically after fault condition is removed. |              |               |              |
|                       | OVER VOLTAGE  | 5.75 ~ 6.75V   | 13.8 ~ 16.2V | 17.25 ~ 20.25 | 27.6 ~ 32.4V |
| ENVIRONMENT           | WORKING TEMP.   | -10 ~ +60°C (Refer to output load derating curve)  |              |               |              |
|                       | WORKING HUMIDITY  | 20 ~ 90% RH non-condensing   |              |               |              |
|                       | STORAGE TEMP., HUMIDITY   | -20 ~ +85°C, 10 ~ 95% RH   |              |               |              |
|                       | TEMP. COEFFICIENT   | ±0.03%/°C (0 ~ 50°C)   |              |               |              |
|                       | VIBRATION   | 10 ~ 500Hz, 2G 10min./1cycle, period for 60min. each along X, Y, Z axes  |              |               |              |
| SAFETY & EMC (Note 4) | SAFETY STANDARDS  | UL1012, UL1950, TUV EN60950 Approved   |              |               |              |
|                       | WITHSTAND VOLTAGE   | I/P-O/P:3KVAC    I/P-FG:1.5KVAC    O/P-FG:0.5KVAC  |              |               |              |
|                       | ISOLATION RESISTANCE  | I/P-O/P, I/P-FG, O/P-FG:100M Ohms/500VDC   |              |               |              |
|                       | EMI CONDUCTION & RADIATION  | Compliance to EN55022 (CISPR22) Class B  |              |               |              |
|                       | HARMONIC CURRENT  | Compliance to EN61000-3-2,-3   |              |               |              |
|                       | EMS IMMUNITY  | Compliance to EN61000-4-2,3,4,5,6,8,11; ENV50204, EN55024, Light industry level, criteria A                              |              |               |              |
| OTHERS                | MTBF  | 316.2K hrs min.      MIL-HDBK-217F (25°C)  |              |               |              |
|                       | DIMENSION   | 159*97*38mm (L*W*H)  |              |               |              |
|                       | PACKING   | 0.51Kg; 24pcs/13.1Kg/0.7CUFT   |              |               |              |
| NOTE                  | <ol style="list-style-type: none"> <li>1. All parameters NOT specially mentioned are measured at 230VAC input, rated load and 25°C of ambient temperature.</li> <li>2. Ripple &amp; noise are measured at 20MHz of bandwidth by using a 12" twisted pair-wire terminated with a 0.1uf &amp; 47uf parallel capacitor.</li> <li>3. Tolerance : includes set up tolerance, line regulation and load regulation.</li> <li>4. The power supply is considered a component which will be installed into a final equipment. The final equipment must be re-confirmed that it still meets EMC directives.</li> </ol> |  |              |               |              |

■ Mechanical Specification

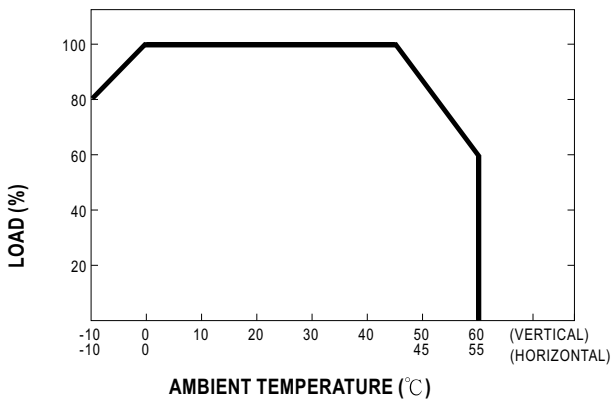
Case No. 901 Unit:mm



Terminal Pin. No Assignment

| Pin No. | Assignment | Pin No. | Assignment   |
|---------|------------|---------|--------------|
| 1       | AC/L       | 4       | DC OUTPUT -V |
| 2       | AC/N       | 5       | DC OUTPUT +V |
| 3       | FG $\perp$ |         |              |

■ Output Derating



■ Static Characteristics (24V)

